

NAME:



# MILFORDLAND

## Adult Summer Reading Program 2026

Walk down the Garden Path! Turn the page for instructions...

PARTICIPANT #:

**Memorial Garden**



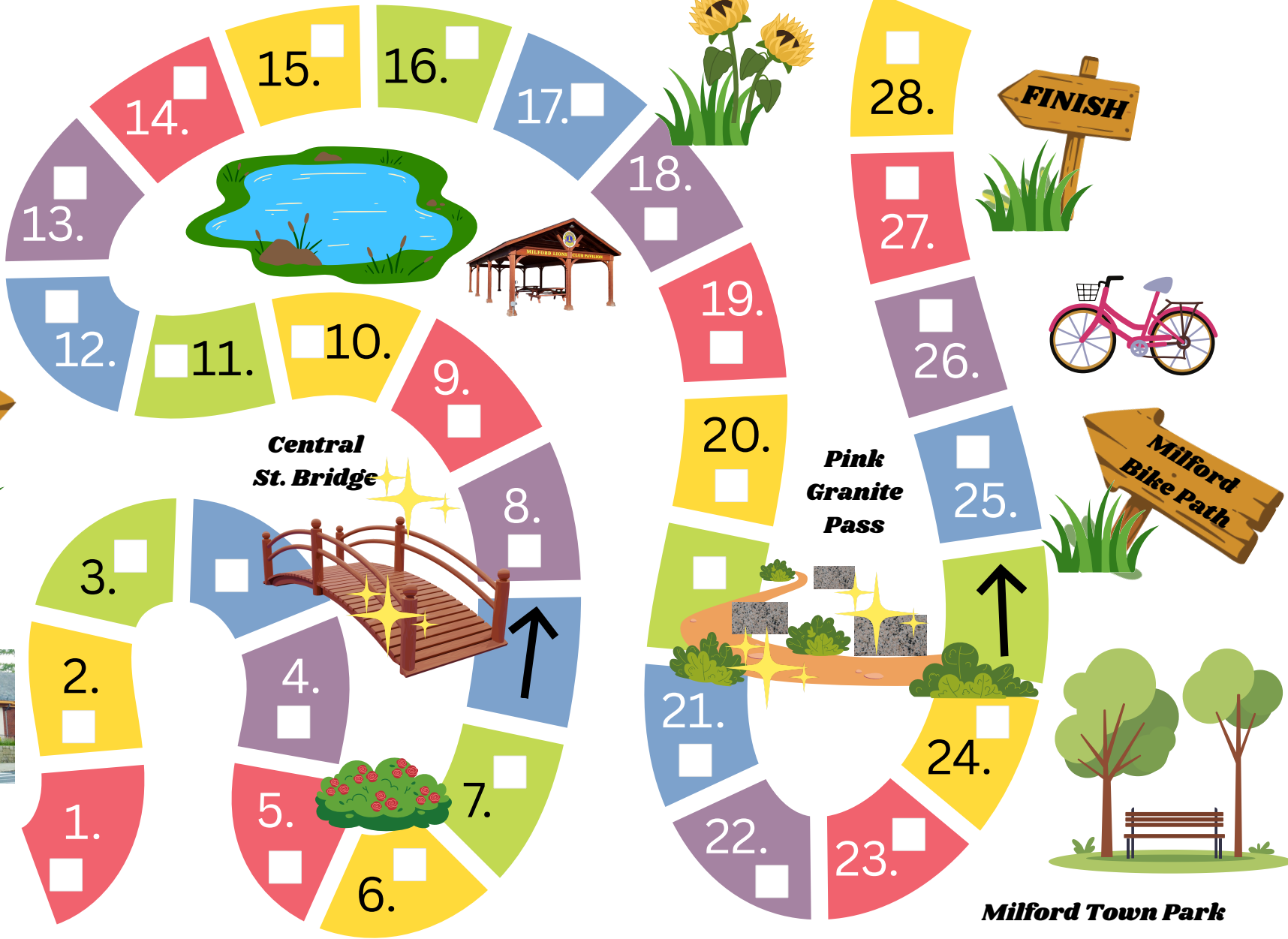
**Dewey**



June 15 - September 4



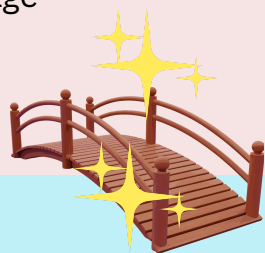
**Milford Town Library**



# MILFORDLAND

## Square Rules

<p><b>RED</b></p> <p>Recommendations. Seek or give a book recommendation to...</p>	<p><b>YELLOW</b></p> <p>Your Choice! Find a...</p>	<p><b>GREEN</b></p> <p>Genre. Identify a book in each of these genres to add to your "TBR" list!</p>	<p><b>BLUE</b></p> <p>Things to Do</p>	<p><b>PURPLE</b></p> <p>Programs &amp; Resources</p>
<ul style="list-style-type: none"> <li>1. Friend</li> <li>5. Family member</li> <li>9. Coworker</li> <li>14. Member of the Milford community</li> <li>19. Librarian</li> <li>23. Followers of MTL social media pages using #MTLAdultSRP2026</li> <li>27. Someone not your age</li> </ul>	<ul style="list-style-type: none"> <li>2. Newly-released title</li> <li>6. New-to-you author</li> <li>10. Favorite to re-read</li> <li>15. Format you aren't used to</li> <li>20. Community cookbook</li> <li>24. Book about American history in 974</li> <li>28. Book about gardening, cooking, or ecology</li> </ul>	<ul style="list-style-type: none"> <li>3. Classic</li> <li>7. Fantasy or sci-Fi</li> <li>11. Mystery</li> <li>16. Non-fiction</li> </ul>	<ul style="list-style-type: none"> <li>12. Plant your wildflower seeds</li> <li>17. Patronize a locally-owned Milford business or restaurant</li> <li>21. Look for the new sensory play equipment in Milford Town Park</li> <li>25. Marvel at the Library garden - it is maintained by the Greenleaf Garden Club!</li> </ul>	<ul style="list-style-type: none"> <li>4. Participate in a Library program/event</li> <li>8. Pick up a Spice of the Month and make the recipe</li> <li>13. Check out a Museum Pass</li> <li>18. Borrow an item from our Library of Things</li> <li>22. Try a "new to you" digital service on our Databases page</li> <li>26. Propose a program at milfordtownlibrary.org → Departments → Reference → Propose a Program</li> </ul>

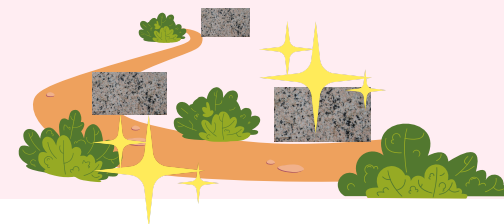


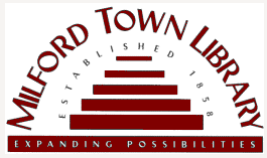
### **CENTRAL STREET BRIDGE**

To use the Central Street Bridge, read a book with BLUE in the cover. Then proceed to 8.!(Want to go the "long way"? You may choose to skip Central Street Bridge by proceeding to 4. and then follow the path. Earn 4 BONUS tickets by completing 4 - 7!)

### **PINK GRANITE PASS**

To take the Pink Granite Pass, read a book with PINK in the cover. Then proceed to 25.!(Want to go the "long way"? You may choose to skip Pink Granite Pass by proceeding to 21. and then follow the path. Earn 4 BONUS tickets by completing 21 - 24!)





## Adult Summer Reading 2026



***Planta una semilla, lee***

***Plante uma semente, leia***

**June 15 - September 4,  
2026**

*This program  
is generously  
sponsored by*



[milfordtownlibrary.org/friends-library](http://milfordtownlibrary.org/friends-library)

### HOW IT WORKS

Much like a real garden path where you can meander or take a direct route, complete the Milfordland Garden Path in the order you choose! Rules for colored squares are on the reverse side of the Milfordland Garden Path board.

Finish four squares of any color to receive your first ticket. By completing the main part of the Garden Path using both Central St. Bridge and Pink Granite Pass, you'll earn 4 tickets to distribute amongst whichever prize drawings you choose! By also completing squares 4-7 and/or 21-24 (skipping Central St. Bridge and/or Pink Granite Pass), you will earn BONUS tickets (4 per path section, up to 8)!

You can present your Milfordland Log at the Information Desk for verification and ticket(s). All Milfordland Logs must be submitted prior to our 6 p.m. closing time on Friday, September 4, 2026. Prize drawings and winner notification will take place Tuesday, September 8. Prizes can be picked up at the Information Desk anytime during regular Library hours, through Friday, September 18. Prizes not picked up will be awarded to another winner.

### PRIZES

#### Participating

Submit your name to the Information Desk. You'll earn:

- 1 "Book Bucks" certificate to spend at the Friends Bookstore (located next to the grandfather clock on the Library's main floor)
- A packet of wildflower seeds to use during the course of the Adult Summer Reading Program

#### Finishing the Milfordland Path

Finish four squares of any color to receive your first ticket. Using both Central St. Bridge & Pink Granite Pass (skipping squares 4-7 and 21-24) to complete the path earns you 4 tickets. Completing squares 4-7 and/or 21-24 will earn you 4 more tickets for each path section (up to 8 additional tickets). You may apply your tickets toward any of our three "Plant a Seed, Read!" Prize Drawings:

#### **Prize 1: Books & Beans**

Friends of Milford Town Library reusable tote bag, filled with an assortment of titles for all reading tastes, along with a \$50 gift certificate from our friends at Blooming Hearts Roastery!

#### **Prize 2: Farm to Table**

A \$75 gift certificate from our friends at The UXLocale in Uxbridge! Specializing in wood-fired pizza, pasta, and nightly Mediterranean-inspired specials.

#### **Prize 3: Plant Your Own Patch**

A \$75 gift certificate to Kelly's Farm in Upton! Locally grown fruit, vegetables, plants, flowers, pumpkins and Christmas trees; plus an ever-changing variety of local products and baked goods from their farm store.